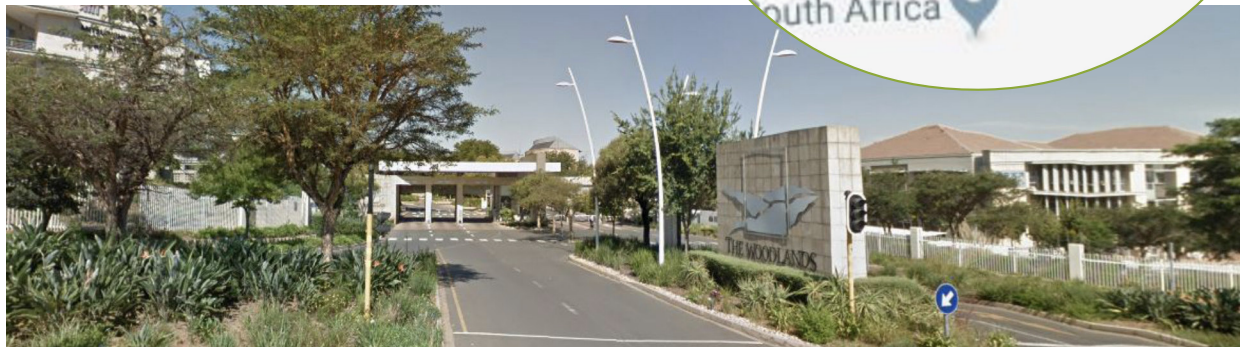
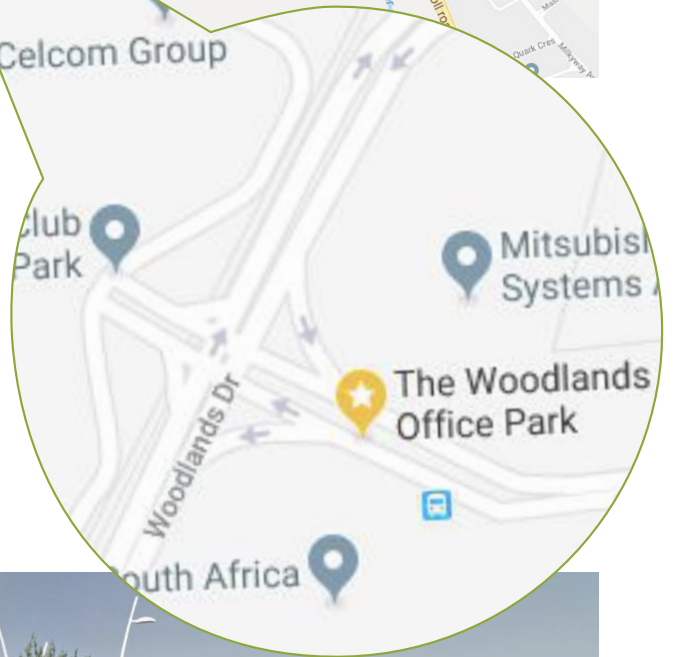
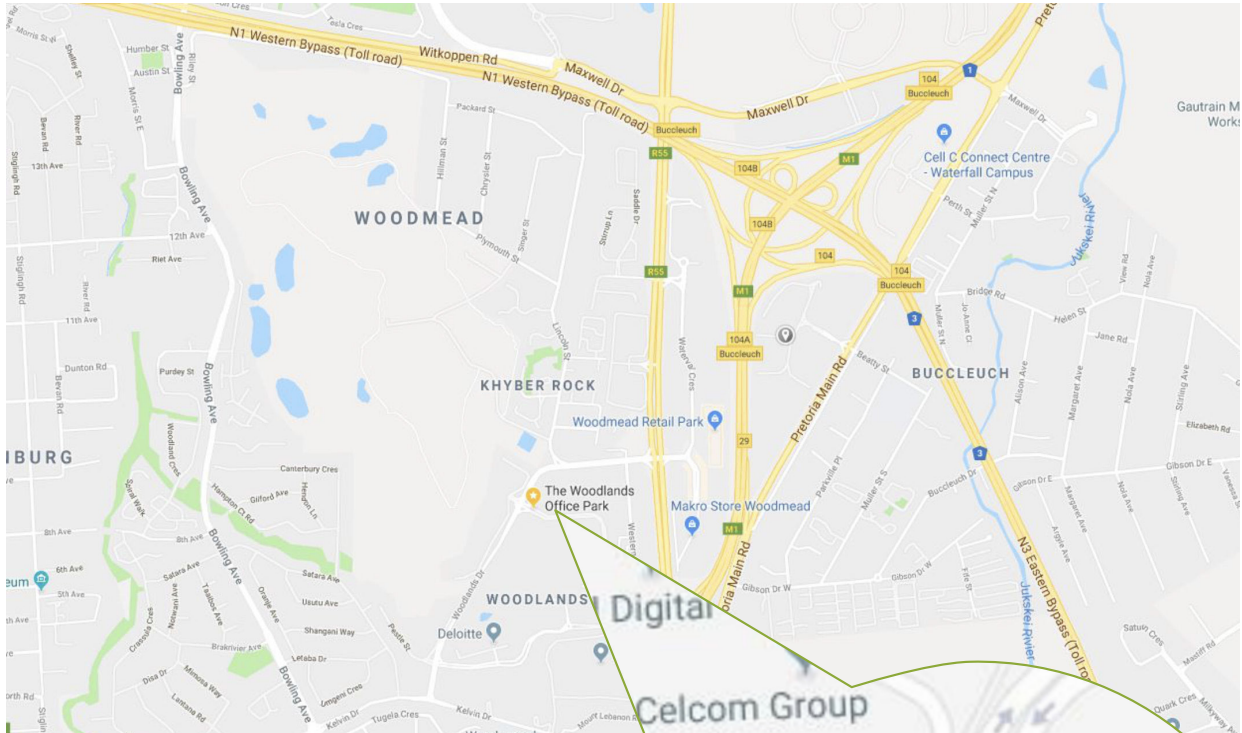




POLSON

ATTORNEYS | NOTARIES | CONVEYANCERS

MAP



t¹ +27 (0)11 656 3870 | t² +27 (0)10 035 1090 | e info@polsonlaw.co.za | polsonlaw.co.za
The Woodlands Office Park | First Floor | Building 13 | Woodlands Drive | Woodmead | Sandton

Partners: John Roderick Graeme Polson BA LLB (Stell), LLM (Rau), H Dip Tax (Wits) & Jean Graeme Polson BComm (Law) Hons (Economics) (UP), LLB (Unisa)
Assisted by: Graeme Polson BComm (Law) LLB (Unisa), MBA (IB) (SIU, Paris) **Conveyancer:** Jeannette Bodemer LLB (UP) (AIPSA)

